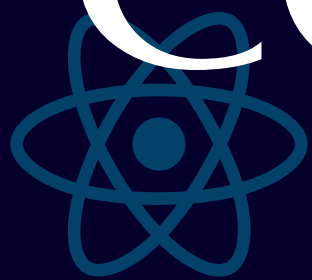


RECURSE

- PRESENTS -



CODENOVATE



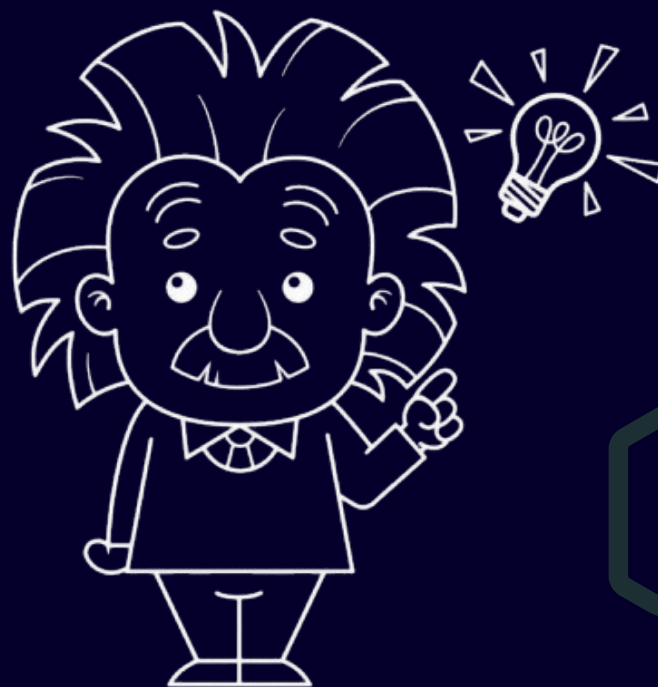
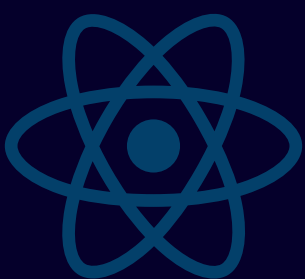
Not a coding genius? No sweat! Dive in, level up, and make epic connections. Whether you're a rookie or a pro, this is your chance to turn wild ideas into real-world impact!



DIGITAL CURRENCY FOR COLLEGE TRANSACTIONS

Create a secure digital platform where students can convert real money into campus-specific points. These points can be used for transactions across campus services like dining, bookstores, events, and recreational facilities, with participating merchants accepting them seamlessly.

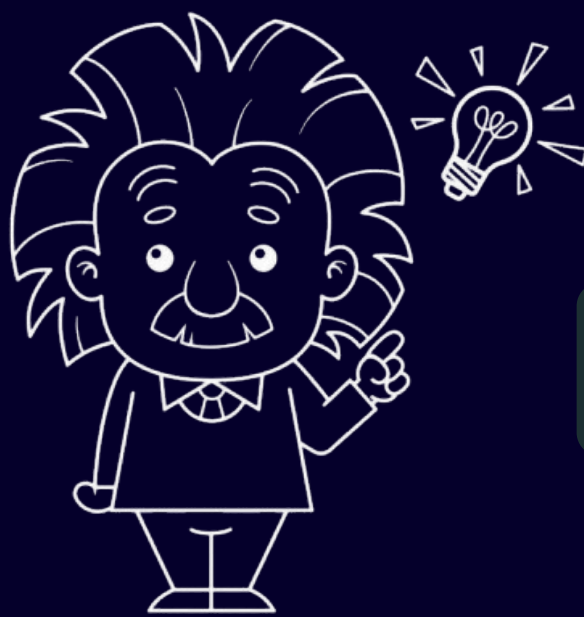
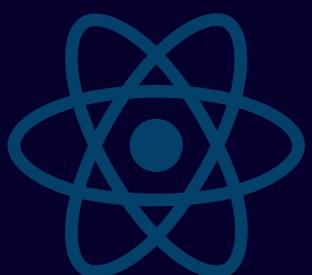
The user-friendly app will enable students to manage balances, track transactions, and access exclusive offers, all while fostering a cashless, connected campus ecosystem.



COGNITIVE LEARNING FOR PERSONALIZED EDUCATION

A cognitive learning platform for personalized education is an AI-driven solution designed to adapt to each learner's unique needs, preferences, and pace. By leveraging advanced analytics and cognitive science principles, it provides tailored learning experiences, real-time feedback, and resource recommendations.

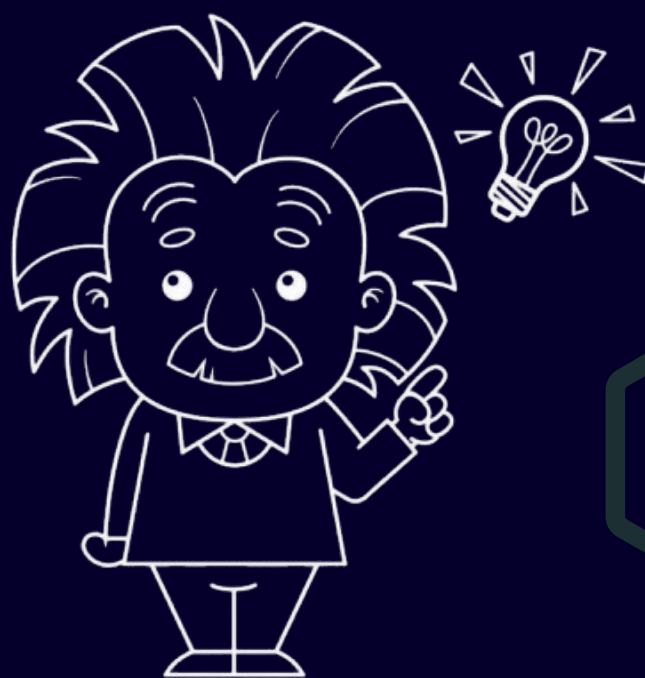
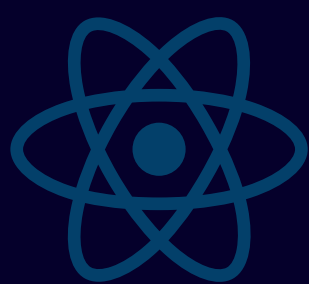
The platform empowers educators with actionable insights into student performance, enabling them to address challenges and enhance outcomes. This innovative approach fosters engagement, closes knowledge gaps, and ensures every learner achieves their full potential.



FOOD REDISTRIBUTION NETWORK

Every day, tons of food in urban areas go to waste due to expiration or surplus prepared meals. This not only has significant environmental consequences but also represents a missed opportunity to feed communities in need.

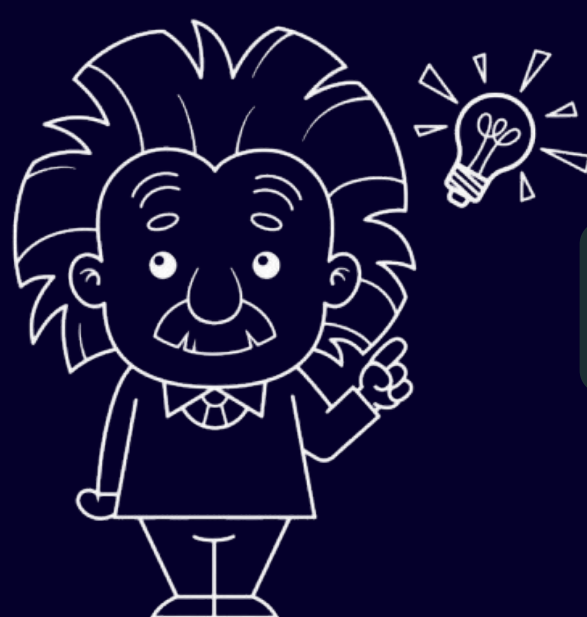
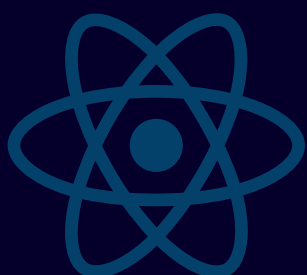
An efficient system is required to connect food suppliers with food banks and non-profit organizations to ensure food is redistributed before it goes to waste.



ANONYMOUS MENTAL HEALTH SUPPORT

Students face growing mental health challenges from academic pressure, social stress, and personal issues, yet many hesitate to seek help due to stigma or fear of judgment.

Existing resources often lack anonymity or are not tailored to students' needs, creating a gap in accessible, confidential support. An innovative solution is needed to address these challenges, offering both preventive and responsive strategies to support student mental health.



DIGITAL TIME CAPSULE

People often leave significant moments scattered across photos, text, audio, and videos. An intelligent platform is needed to compile this fragmented content into a cohesive, shareable narrative, organizing memories into meaningful "life chapters."

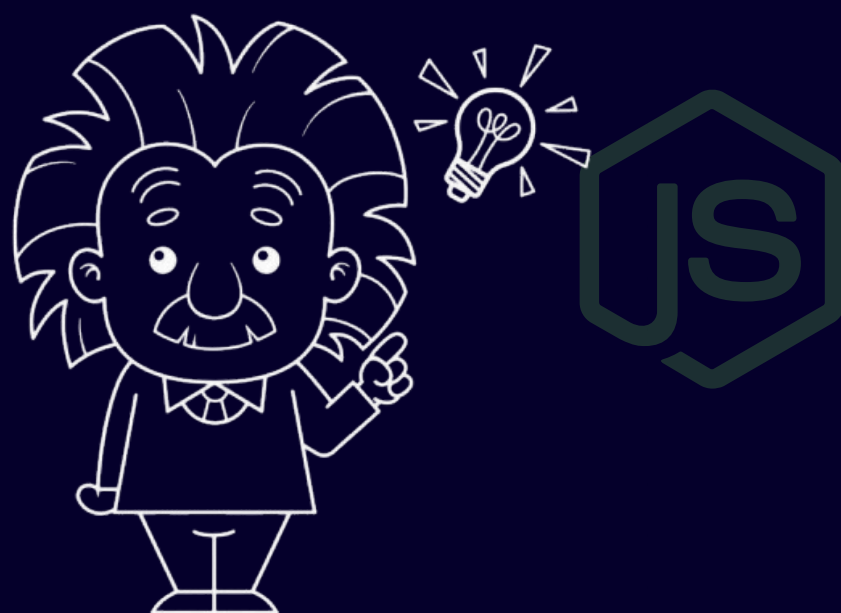
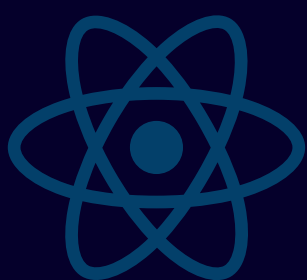
It would capture emotional context, enable long-term preservation, and support time-based sharing, creating a lasting documentary of users' lives for future generations.



BALANCE YOUR BUCKS

Digital payments make spending effortless, but this often leads to impulsive and uncontrolled non-essential purchases. While essential expenses are typically managed, many individuals struggle to prioritize spending and maintain financial balance.

The challenge is to find a way to manage essential payments effortlessly while curbing unnecessary expenditures, without restricting financial freedom.



AUTOMATED API DOCUMENT GENERATOR

Maintaining accurate, up-to-date API documentation is time-consuming and often leads to inconsistencies with the actual code. Manual updates can cause errors and hinder collaboration.

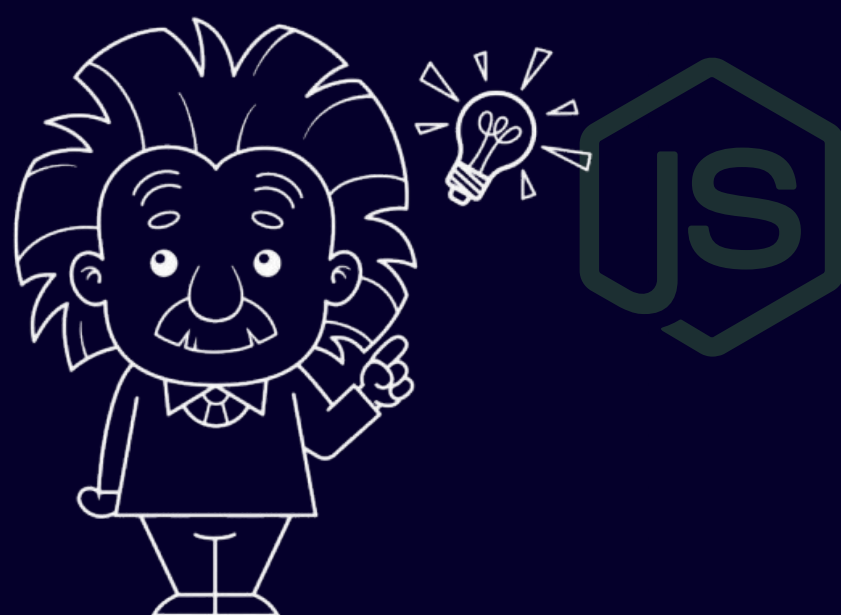
There is a need for a solution that automatically tracks backend changes and generates updated documentation, ensuring it remains in sync with the code, saving time, and improving clarity, consistency, and accessibility.



ULTRA-SECURE CHAT PLATFORM USING ASYMMETRIC ENCRYPTION

In today's digital age, private communication faces constant threats from eavesdropping, data breaches, and surveillance, as many chat platforms lack robust security due to weak encryption or centralized architectures. This project aims to create a secure chat platform leveraging asymmetric encryption to ensure end-to-end encryption, message authenticity, and data integrity.

It will prioritize strong encryption through asymmetric public keys, authentication via digital signatures, a privacy-first design with no plaintext storage or metadata leaks, and seamless multi-device access. By combining robust encryption with a decentralized architecture and intuitive design, this platform will redefine secure communication while ensuring convenient access for users across multiple devices.



OPEN INNOVATION

Participants are open to bring their own problem statement and a solution. Make sure that the problem statement and its significance is clearly explained in the idea submission (PPT).

